

OSTREA

Design by Mathias De Ferm



JOS
STANDARD / ON REQUEST
DE GROOT
TERRASADVIES



OSTREA SPECIFICATIONS

DINING CHAIR	
REF:	OST 47...
WEIGHT:	5,5 kg / 12,1 Lbs



	COATED STAINLESS STEEL			
	WR	PB	BR	A
	OST 47 WR...	OST 47 PB...	OST 47 BR...	OST 47 A...
	•	•	•	•
	CUSHION			
	PIL OST 47 ED... (SEAT & BACK)			
CAT. A		•		
CAT. B		•		
CAT. C		•		
	CUSHION			
	PIL OST 47S RS... (SEAT)			
CAT. A		•		
CAT. B		•		
CAT. C		•		
POLY.		•		

CATEGORY A FABRICS ACRYLIC

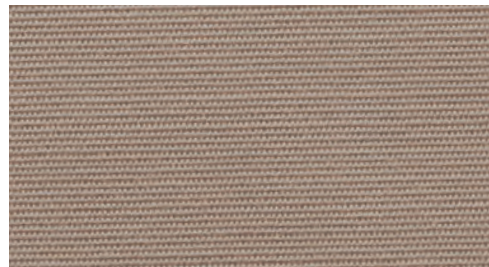
WHITE
REF: ...WU - CAT.: A - ACRYLIC



COCONUT
REF: ...CC - CAT.: A - ACRYLIC



CAPPUCCINO
REF: ...CAU - CAT.: A - ACRYLIC



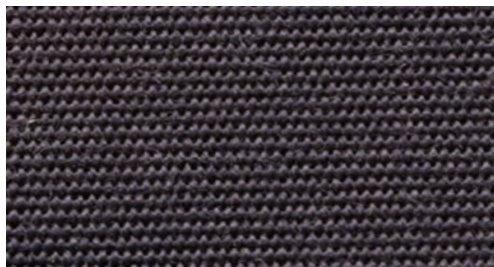
ROCK
REF: ...ROU - CAT.: A - ACRYLIC



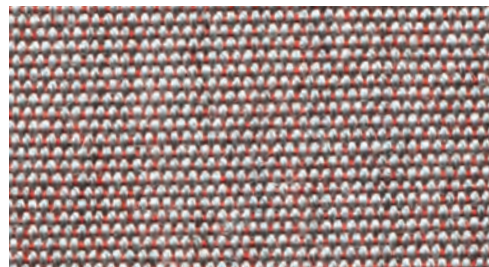
ECRU
REF: ...EU - CAT.: A - ACRYLIC



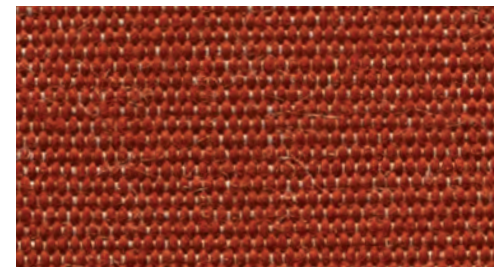
NAVY BLUE
REF: ...NBU - CAT.: A - ACRYLIC



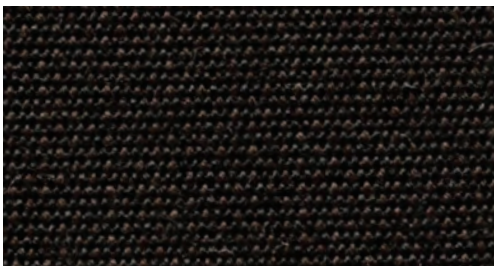
ROSE
REF: ...RO - CAT.: A - ACRYLIC



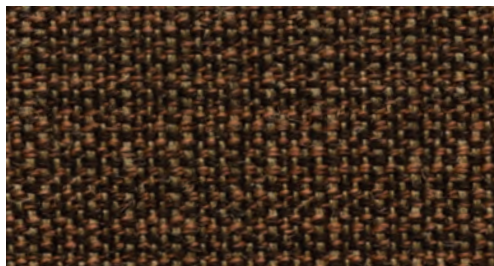
TERRA
REF: ...TER - CAT.: A - ACRYLIC



BLACK
REF: ...ZU - CAT.: A - ACRYLIC



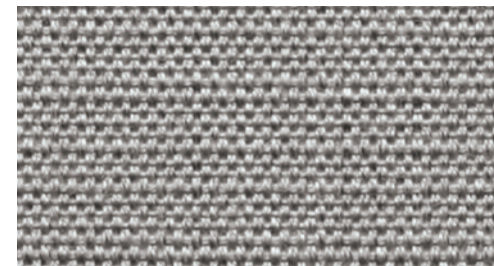
CHOCOLAT LINEN
REF: ...CHL - CAT.: A - ACRYLIC



SAGE LINEN
REF: ...SL - CAT.: A - ACRYLIC



FROST LINEN
REF: ...FL - CAT.: A - ACRYLIC



CATEGORY B FABRICS ACRYLIC & POLYPROPYLENE

WHITE HEAVY
REF: ...WAH - CAT.: B - POLYPROPYLENE



LIGHT BLUE HEAVY
REF: ...LBH - CAT.: B - POLYPROPYLENE



AZURE BLUE HEAVY
REF: ...AZH - CAT.: B - POLYPROPYLENE



ROCK HEAVY
REF: ...ROH - CAT.: B - POLYPROPYLENE



SAND HEAVY
REF: ...SAH - CAT.: B - POLYPROPYLENE



SAFFRON HEAVY
REF: ...SFH - CAT.: B - POLYPROPYLENE



RED WINE HEAVY
REF: ...RWH - CAT.: B - POLYPROPYLENE



CARMINE HEAVY
REF: ...CH - CAT.: B - POLYPROPYLENE



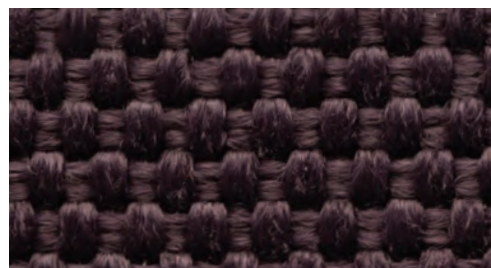
MOSS HEAVY
REF: ...MH - CAT.: B - POLYPROPYLENE



CARAMEL HEAVY
REF: ...CAH - CAT.: B - POLYPROPYLENE



AUBERGINE HEAVY
REF: ...AUH - CAT.: B - POLYPROPYLENE



GRANITE HEAVY
REF: ...GRH - CAT.: B - POLYPROPYLENE



PITCH BLACK HEAVY
REF: ...ZUPH - CAT.: B - POLYPROPYLENE



DARK BROWN TWIN
REF: ...DBT - CAT.: B - POLYPROPYLENE



WHITE TWIN
REF: ...WUT - CAT.: B - POLYPROPYLENE

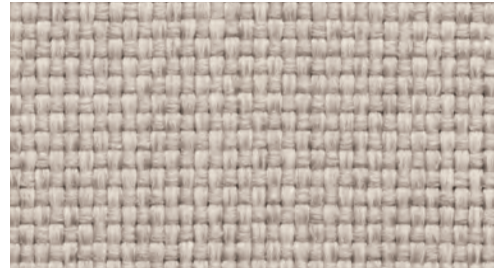


CATEGORY B FABRICS ACRYLIC & POLYPROPYLENE

NATURAL WHITE DOT
REF: ...NWD - CAT.: B - POLYPROPYLENE



NATURAL GREY DOT
REF: ...NGD - CAT.: B - POLYPROPYLENE



NATURAL SILVER DOT
REF: ...NSD - CAT.: B - POLYPROPYLENE



NATURAL ECRU DOT
REF: ...NED - CAT.: B - POLYPROPYLENE



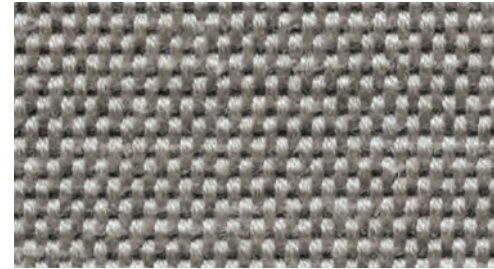
NATURAL LINEN DOT
REF: ...NLD - CAT.: B - POLYPROPYLENE



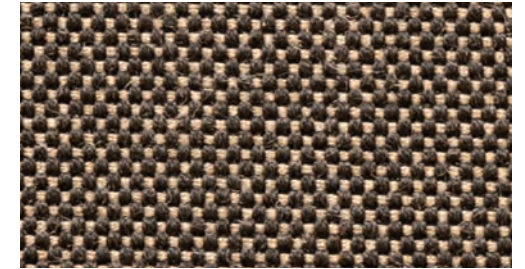
STONE FLAX
REF: ...SF - CAT.: B - ACRYLIC



DESERT STONE FLAX
REF: ...DSF - CAT.: B - ACRYLIC

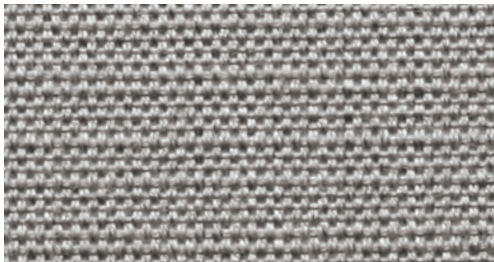


MARBLE FLAX
REF: ...MAF - CAT.: B - ACRYLIC



CATEGORY B/C LAMINATED FABRICS ACRYLIC

FROST LINEN LAMINATED
REF: ...FLL - CAT.: B - ACRYLIC



TUXEDO LINEN LAMINATED
REF: ...TULL - CAT.: B - ACRYLIC



DESERT STONE FLAX LAMINATED
REF: ...DSFL - CAT.: C - ACRYLIC



MARBLE FLAX LAMINATED
REF: ...MAFL - CAT.: C - ACRYLIC



CATEGORY C FABRICS ACRYLIC & POLYPROPYLENE

PASTEL SAND
REF: ...PAS - CAT.: C - ACRYLIC



PASTEL BLUE
REF: ...PAB - CAT.: C - ACRYLIC



PASTEL YELLOW
REF: ...PAY - CAT.: C - ACRYLIC



PASTEL COCONUT
REF: ...PAC - CAT.: C - ACRYLIC



PASTEL GREEN
REF: ...PAG - CAT.: C - ACRYLIC



PASTEL ORANGE
REF: ...PAO - CAT.: C - ACRYLIC



PASTEL RED
REF: ...PAR - CAT.: C - ACRYLIC



MOSS
REF: ...MOS - CAT.: C - POLYPROPYLENE



BOUCLE SAND
REF: ...BOS - CAT.: C - POLYPROPYLENE



BOUCLE WHITE
REF: ...BOW - CAT.: C - POLYPROPYLENE



BOUCLE GREY
REF: ...BOG - CAT.: C - POLYPROPYLENE



BOUCLE BLUE
REF: ...BOB - CAT.: C - POLYPROPYLENE



ECRU LINEN
REF: ...EUL - CAT.: C - ACRYLIC



JUNIPER GREEN
REF: ...JG - CAT.: C - ACRYLIC



AUBERGINE MESH
REF: ...AUM - CAT.: C - ACRYLIC



NIGHT BLUE
REF: ...NB - CAT.: C - ACRYLIC



CATEGORY C FABRICS ACRYLIC & POLYPROPYLENE

VANILLE VELVET
REF: ...VAV - CAT.: C - ACRYLIC



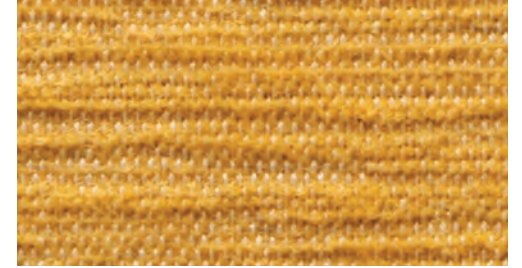
ECRU VELVET
REF: ...EUV - CAT.: C - ACRYLIC



SALMON VELVET
REF: ...SAV - CAT.: C - ACRYLIC



SAFFRON VELVET
REF: ...SFV - CAT.: C - ACRYLIC



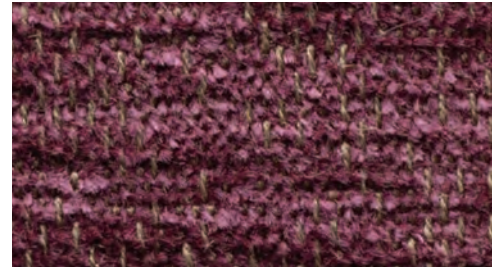
DARK BROWN VELVET
REF: ...DBV - CAT.: C - ACRYLIC



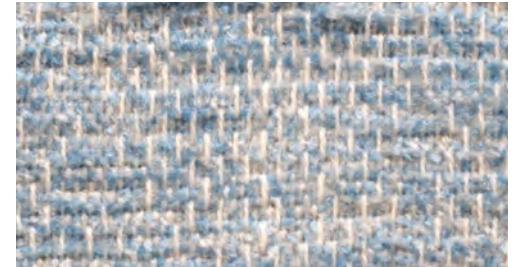
TERRA VELVET
REF: ...TEV - CAT.: C - ACRYLIC



AUBERGINE VELVET
REF: ...AUV - CAT.: C - ACRYLIC



ICE BLUE VELVET
REF: ...IBV - CAT.: C - ACRYLIC



SILVER VELVET
REF: ...SIV - CAT.: C - ACRYLIC



IRON GREY VELVET
REF: ...IGV - CAT.: C - ACRYLIC



ORANGE CHEVRON
REF: ...ORC - CAT.: C - POLYPROPYLENE



OLD ROSE
REF: ...OLR - CAT.: C - POLYPROPYLENE



LIGHT BOUCLE WHITE
REF: ...LBW - CAT.: C - POLYPROPYLENE



LIGHT BOUCLE SAND
REF: ...LBS - CAT.: C - ACRYLIC



LIGHT BOUCLE GREY
REF: ...LBG - CAT.: C - POLYPROPYLENE



GREY MESH
REF: ...GM - CAT.: C - ACRYLIC

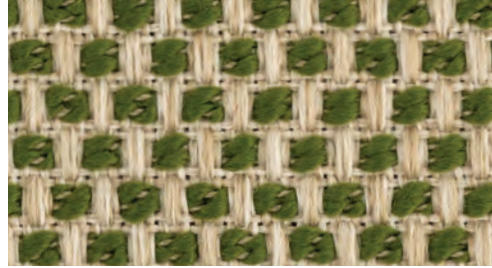


CATEGORY C FABRICS ACRYLIC & POLYPROPYLENE

CAMEL MESH
REF: ...CM - CAT.: C - POLYPROPYLENE



MOSS MESH
REF: ...MM - CAT.: C - POLYPROPYLENE



SAND MESH
REF: ...SM - CAT.: C - POLYPROPYLENE



CATEGORY C FABRICS POLYSKIN

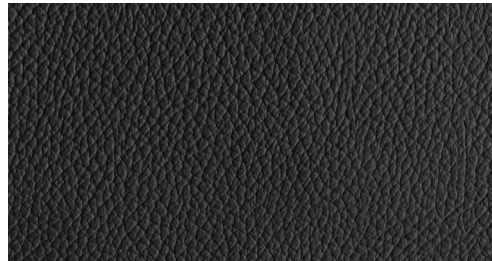
ONLY AVAILABLE FOR STRAPPY, STYLETTO & OSTREA COLLECTION!

POLYSKIN IS A SYNTHETIC ALL WEATHER LEATHER IMITATION THAT IS EXTREMELY UV AND WATER RESISTANT.

CAPPUCCINO
REF: ...SCA - CAT.: C - POLYSKIN



BLACK
REF: ...SBL - CAT.: C - POLYSKIN



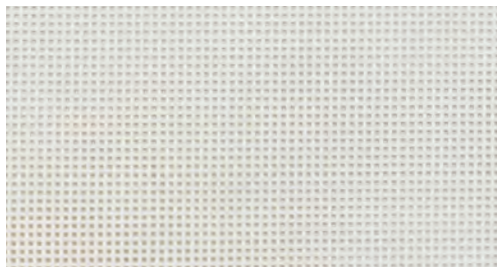
COGNAC
REF: ...SCO - CAT.: C - POLYSKIN



BATYLINE

THE SLINGS ON METAL FRAMED CHAIRS AND LOUNGERS ARE MADE OF BATYLINE® FABRICS, A WOVEN POLYESTER FIBER PROTECTED BY A PVC COATING. THIS COATING GUARANTEES EXCEPTIONAL RESISTANCE TO CLIMATIC CONDITIONS AND UV EXPOSURE. THE FACT THAT THERE IS NO MOISTURE ABSORPTION RESULTS IN QUICK-DRYING, LITTLE SENSITIVITY TO STAINING AND EASY CLEANING.

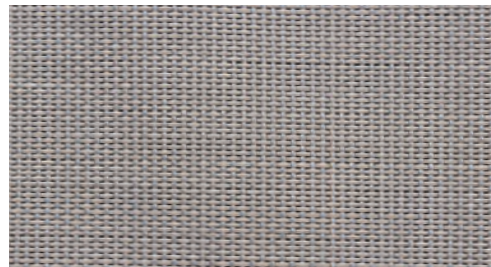
WHITE
REF: ...WU



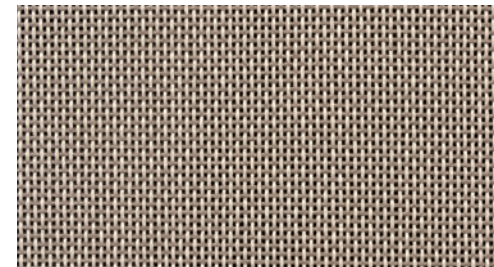
WHITE (FOR NNX(L) - OZN - WV)
REF: ...WUC



PEARL GREY
REF: ...PG



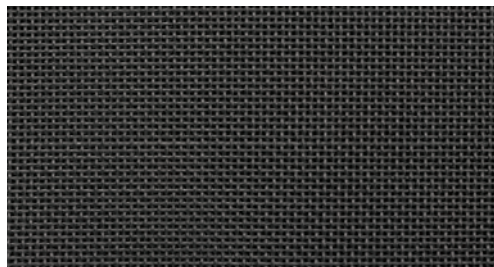
CAPPUCCINO
REF: ...CAU



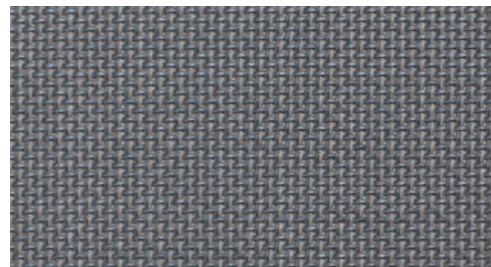
BLACK
REF: ...ZU



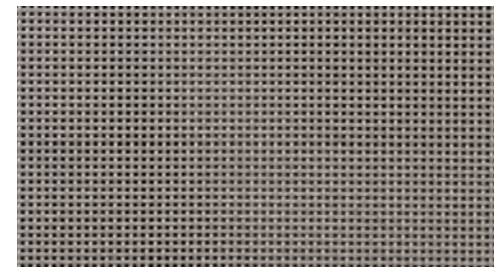
BLACK (FOR NNX(L) - OZN - WV)
REF: ...ZUC



GRAPHITE
REF: ...GRP



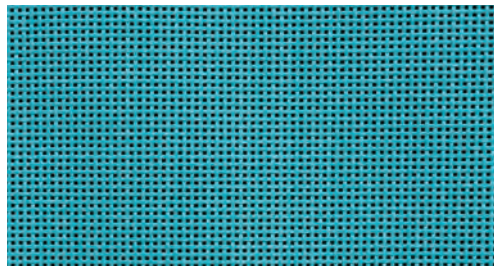
BROWN
REF: ...BRU



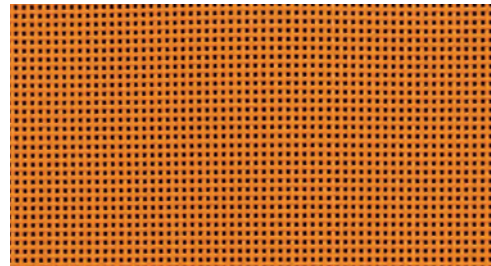
ECRU
REF: ...EU



TURQUOISE
REF: ...TQF



ORANGE
REF: ...ORU



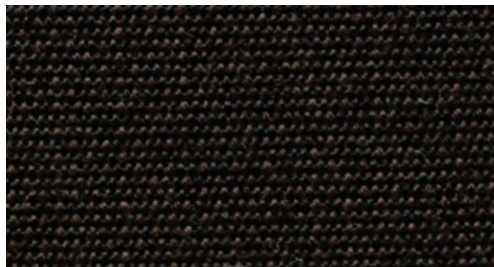
PARASOL FABRICS

FOR OUR SHADY AND BLOOM PARASOL WE USE A THICKER FABRIC WITH A SPECIAL COATING TO FURTHER PROTECT THEM FROM THE ELEMENTS.

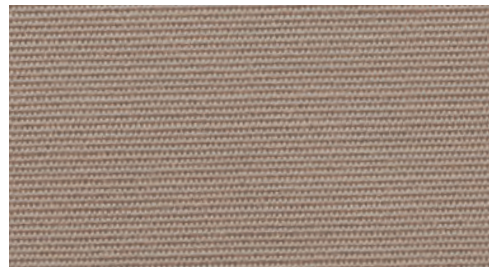
WHITE
REF: ...WU - CAT.: A - ACRYLIC



BLACK
REF: ...ZU - CAT.: A - ACRYLIC



CAPPUCCINO
REF: ...CAU - CAT.: A - ACRYLIC



ECRU
REF: ...EU - CAT.: A - ACRYLIC



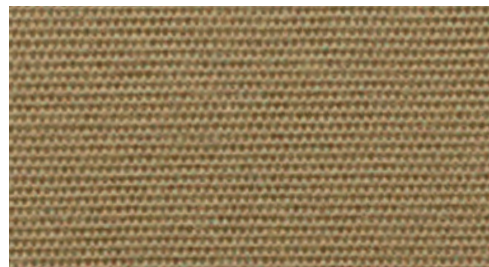
BLUE
REF: ...BU - CAT.: C - ACRYLIC



FONDANT
REF: ...FOU - CAT.: A - ACRYLIC



MOKKA
REF: ...MU - CAT.: A - ACRYLIC



ROCK
REF: ...ROU - CAT.: A - ACRYLIC



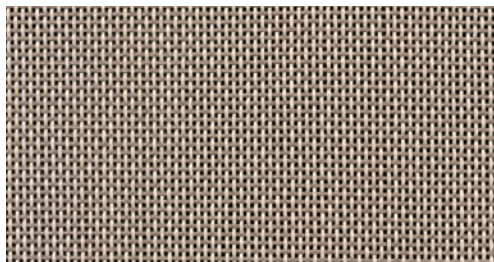
PARASOL BATYLINE

THE BATYLINE FOR OUR OAZZ IS WOVEN TIGHT AND GIVEN A COATING TO FURTHER PROTECT THEM FROM THE ELEMENTS.

WHITE
REF: ...WU



CAPPUCCINO
REF: ...CAU



BLACK
REF: ...ZU

